



**Chicago Regatta
Chicago Yacht Club (OA)
Belmont & Monroe Harbors, Chicago, Illinois
September 14, 2019**

**SAILING INSTRUCTIONS
DISTANCE RACE**

1 RULES

- 1.1 Races will be governed by the rules as defined in The Racing Rules of Sailing, 2017-2020 edition, as adopted by U.S. Sailing (“RRS”). U.S. Sailing prescriptions will apply.
- 1.2 RRS 52 is changed as follows: Power-driven winches and mechanical and electro-mechanical steering devices.
- 1.3 Appendix T1 (Arbitration) will apply and Appendix V (Alternative Penalty) will apply.
- 1.4 Individual class rules are changed as per Section 6 of the Notice of Race.

2 NOTICES TO COMPETITORS

Notices to Competitors will be published on www.chicagoregatta.com, <https://yachtscoring.com/emenu.cfm?eid=9484> and will be sent via e-mail and text to all entered competitors. Additionally, the Race Committee may provide courtesy broadcasts during each Race via VHF 78. These broadcasts are intended to assist all boats in understanding how the race is being conducted. Such broadcasts are not grounds for redress. *This changes RRS 62.1.*

3 AMENDMENTS TO SAILING INSTRUCTIONS

Amendments to the Sailing Instructions will be published on www.chicagoregatta.com and <https://yachtscoring.com/emenu.cfm?eid=9484> no later than 0900 on Saturday, September 14th, 2019. As a courtesy, skippers of entered yachts will be sent notices via e-mail and text regarding amendments, and the Race Committee may broadcast information regarding these amendments via VHF 78. Failure to receive these communications shall not be grounds for redress.

4 SIGNALS MADE ASHORE

- 4.1 Signals made ashore will be displayed at both Monroe and Belmont Stations.
- 4.2 When flag AP is displayed ashore, ‘1 minute’ is replaced with ‘not less than 75 minutes’ in the race signal AP.
- 4.3 Information provided via code flags may also be sent via e-mail and text message to skippers of all entered yachts. The Race Committee may also provide courtesy broadcasts on VHF 78 to assist sailors in understanding when the race will begin. Failure to receive courtesy e-mails, text messages, or broadcasts are not grounds for redress. *This changes RRS 62.1.*

5 SCHEDULE OF RACES

The first warning signal will be at 1030 hours.



6 RACING AREAS

The starting area for the Race will be CASRA Area E, located at 41°52.80 N, 87°34.46 W. (Appx. 128° M, 0.9 NM from Chicago Harbor Light.)

7 CHECK-IN/CHECK-OUT

When arriving at the starting area, boats should approach the Race Committee boat, hail their sail number, and receive acknowledgement from the Race Committee. If a boat must withdraw from the race, it must notify the Race Committee via VHF 78.

8 COURSES

The course will be as outlined in Addendum A.

9 MARKS

Marks will be as outlined in Addendum A.

9.1 The Virtual Mark will be located at 41° 53.2N 87° 30.9W. Boats rounding the Virtual Mark are required to take a photo/screen shot of their GPS as they round the mark. A Time Date Stamp is required. Boats may be required to use this photo as evidence of their rounding of that mark.

9.2 A 8' yellow Tetrahedron will be used as a mark of the course, location is **approximately** 41° 49.3N 87° 31.5W.

10 AREAS THAT ARE OBSTRUCTIONS

The area around the pumping stations (cribs) and the marks placed around them by the Coast Guard are hereby designated as an obstruction. Boats shall treat them as such, and not sail between the marks.

11 THE START

11.1 The starting line will be between a staff displaying an orange flag on the Race Committee signal boat and a yellow floating mark. The Race Committee may set a guard mark. If so, boats shall not pass between the guard mark and the signal boat.

11.2 The race committee may have a floating mark attached to the signal boat at the stern. If a mark is so attached, it shall be part of the signal boat. The painter for this mark shall not be longer than one meter.

11.3 During the starting sequence, the Race Committee will fly the appropriate section flag, as set forth in the below table.

<u>CLASS</u>	<u>CLASS FLAG</u>
PHRF 1	Numeral Pennant 1
PHRF 2	Numeral Pennant 2
J 109	Numeral Pennant 9
PHRF 3	Numeral Pennant 3
Doublehanded	Code Flag Q

11.4 Boats whose class signal has not been made shall keep clear of the starting area.

11.5 Any boat starting more than 10 minutes after its class's start will be scored DNS.

11.6 The Race Committee may combine classes for a start.

11.7 Individual recalls will be signaled in accordance with RRS 29.1. The Race Committee will attempt to hail OCS boats by sail number via VHF 78. Failure to make or hear such hails is not grounds for redress. This changes RRS 62.1(a).



11.8 General recalls will be signaled in accordance with RRS 29.2. The warning signal for restart of a class following a general recall shall be made one minute after the first substitute is removed.

12 THE FINISH

The finish line will be between a staff displaying a blue flag on the Race Committee signal boat and the course side of a finishing mark, which should be left to port. The Race Committee signal boat should be left to starboard.

13 TIME LIMITS

The time limit will be 1700 hours.

14 PROTESTS AND REQUESTS FOR REDRESS

14.1 A boat intending to protest or seek redress shall notify the Race Committee of the sail number(s) of the boat(s) being protested immediately after finishing and shall receive specific acknowledgment.

14.2 Protests and requests for redress shall be filed with the Race Committee within 60 minutes of the time that the Race Committee docks. Protests shall be submitted to the Protest Committee in person at Monroe Station. Protest and redress hearings will be heard as soon as practicable on September 14, 2019 at Monroe Station.

14.4 Violations of Section 4 of the Notice of Race is protestable only by the Race Committee.

15 SECTION BREAKS AND SCORING

15.1 Section breaks for the Distance Race will be set and transmitted to competitors via e-mail or text by 1200 hours on Thursday, September 12th, 2019.

15.2 All boats racing in handicap classes will be scored using their LMPHRF general purpose time on time rating. See Notice of Race 6.2

15.3 Boats racing in a One-Design class shall be scored without a handicap certificate and be scored by order of its finish. Each boat will be scored by its elapsed time within its class, the lowest elapsed time wins.

16 PRIZES

Prizes will be awarded as described in the Notice of Race at the Chicago Regatta Sweet Home Chicago Dock Party immediately following all racing at Chicago Yacht Club Monroe Station on the evening of Saturday, September 14th, 2019. The awards ceremony is scheduled for 2000 hours.

17 FURTHER INFORMATION

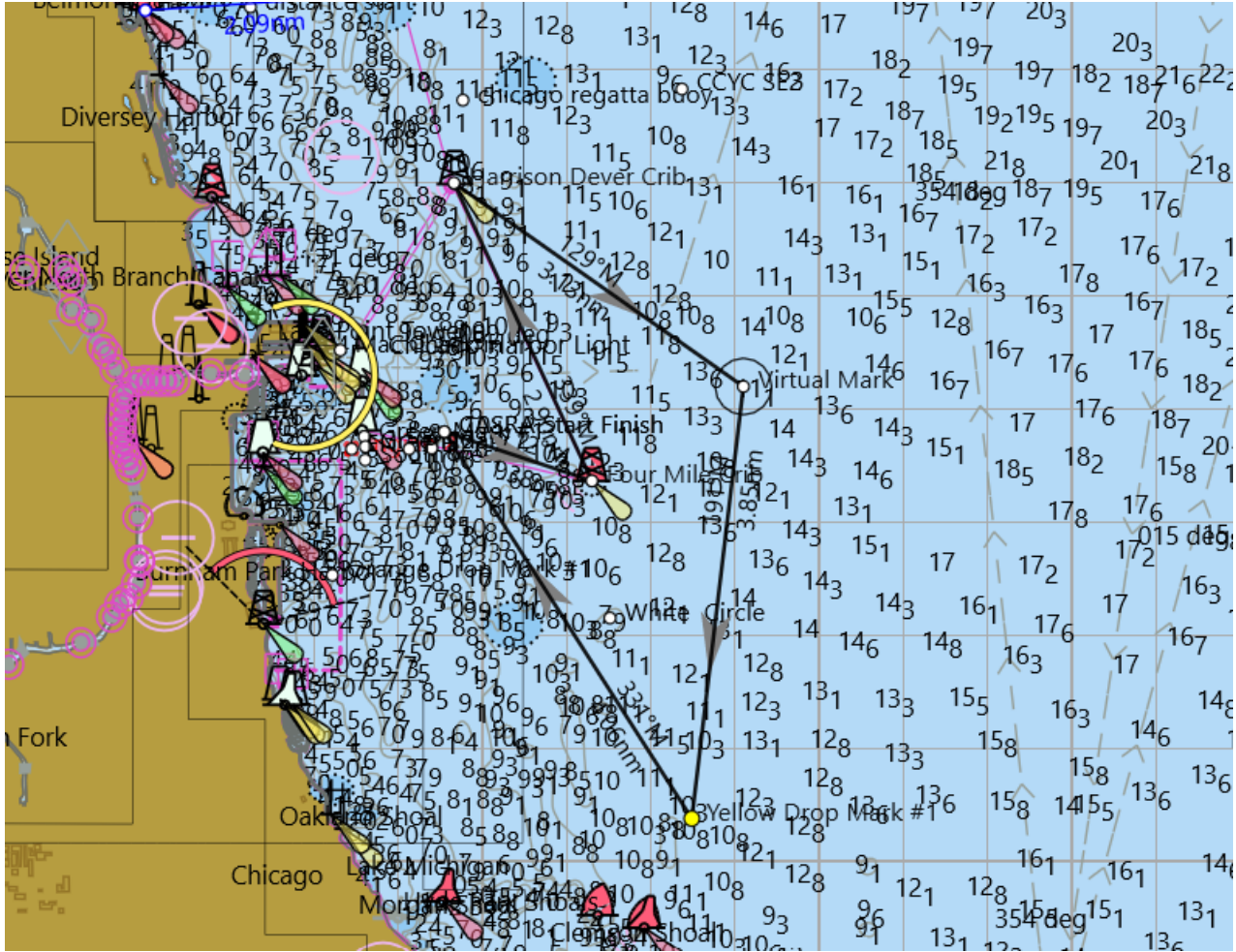
Sydney Symons, Regatta Manager
Chicago Yacht Club
400 E Monroe Street, Chicago, IL 60603
312-861-7777, Ext. 5562 (o)
312-617-2279 (m)
regattamanager@chicagoyachtclub.org

Event website: www.chicagoregatta.com

Thanks to all sailors for joining us for the Chicago Regatta, and thanks to all Regatta donors and sponsors. Special thanks to Wintrust, the Presenting Sponsor of the 2019 Chicago Yacht Club Chicago Regatta.

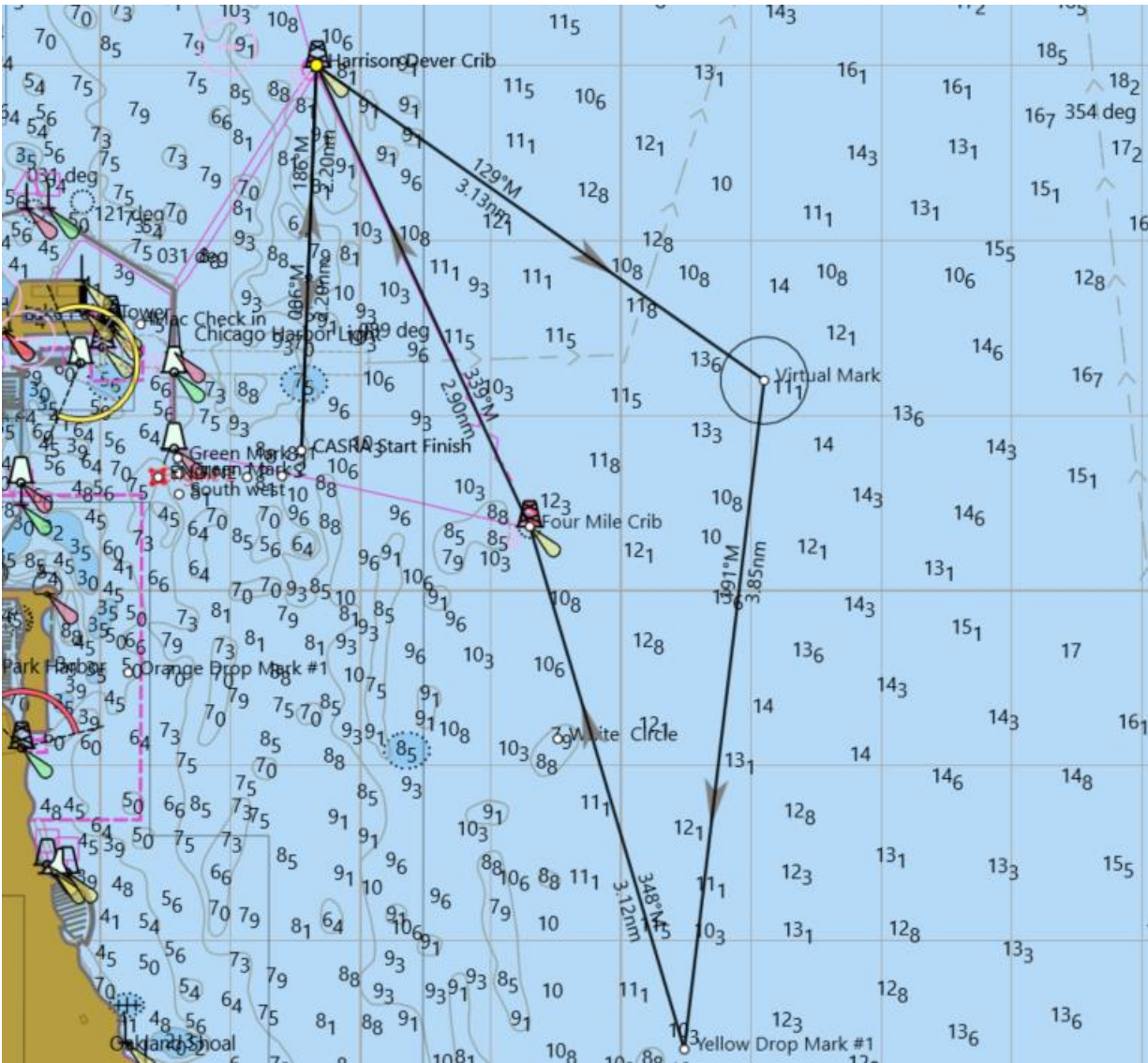


SAILING INSTRUCTIONS ADDENDUM A



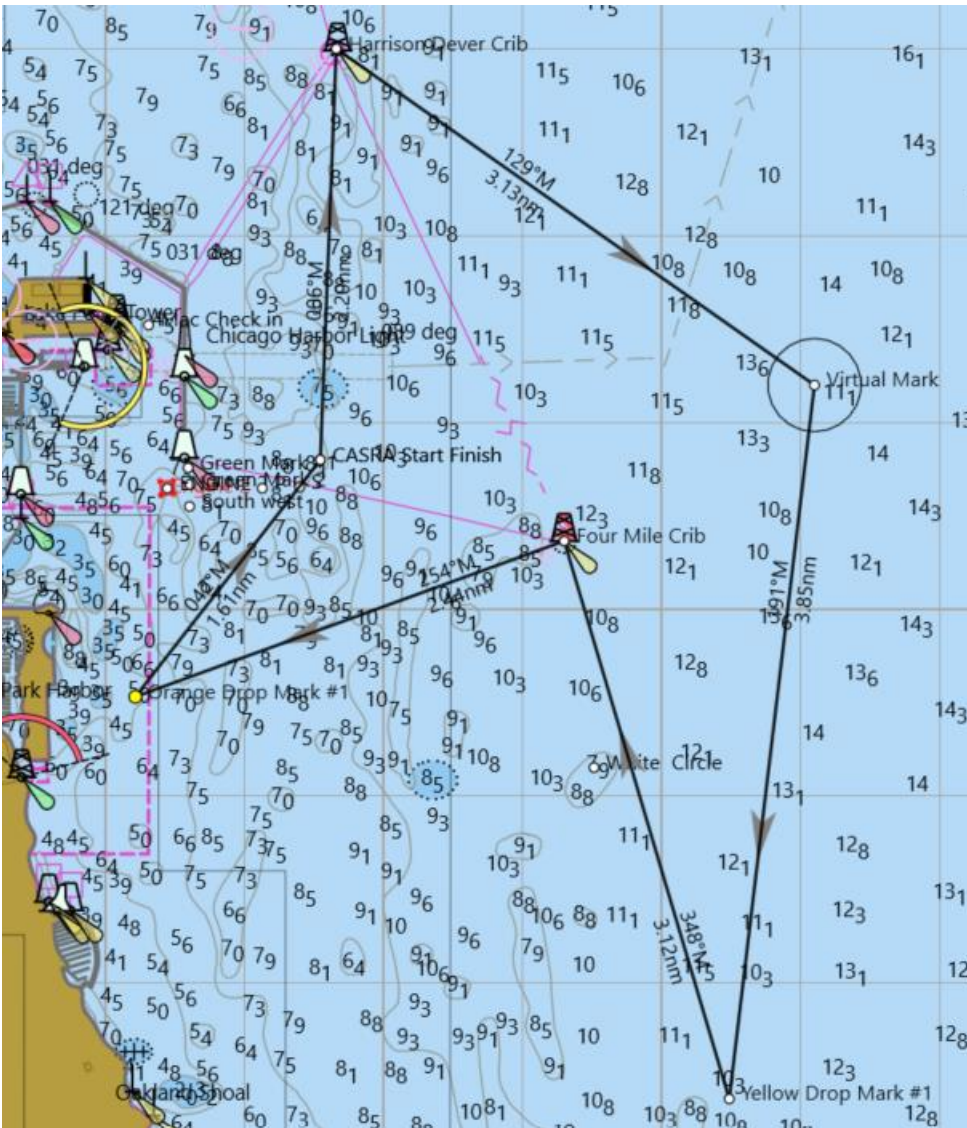
Chicago Regatta-White

Mark	Round	Latitude	Longitude	Bearing	Range nm	Comment
CASRA Start Finish		41 52.79N	087 34.45W			
Four Mile Crib	P	41 52.36N	087 32.70W	112	1.38	
Harrison Dever Crib	S	41 55.00N	087 34.33W	339	2.9	
Virtual Mark	S	41 53.20N	087 30.90W	129	3.13	
Yellow Drop Mark #1	S	41 49.37N	087 31.51W	191	3.85	
CASRA Start Finish		41 52.79N	087 34.45W	331	4.06	
					15.32	



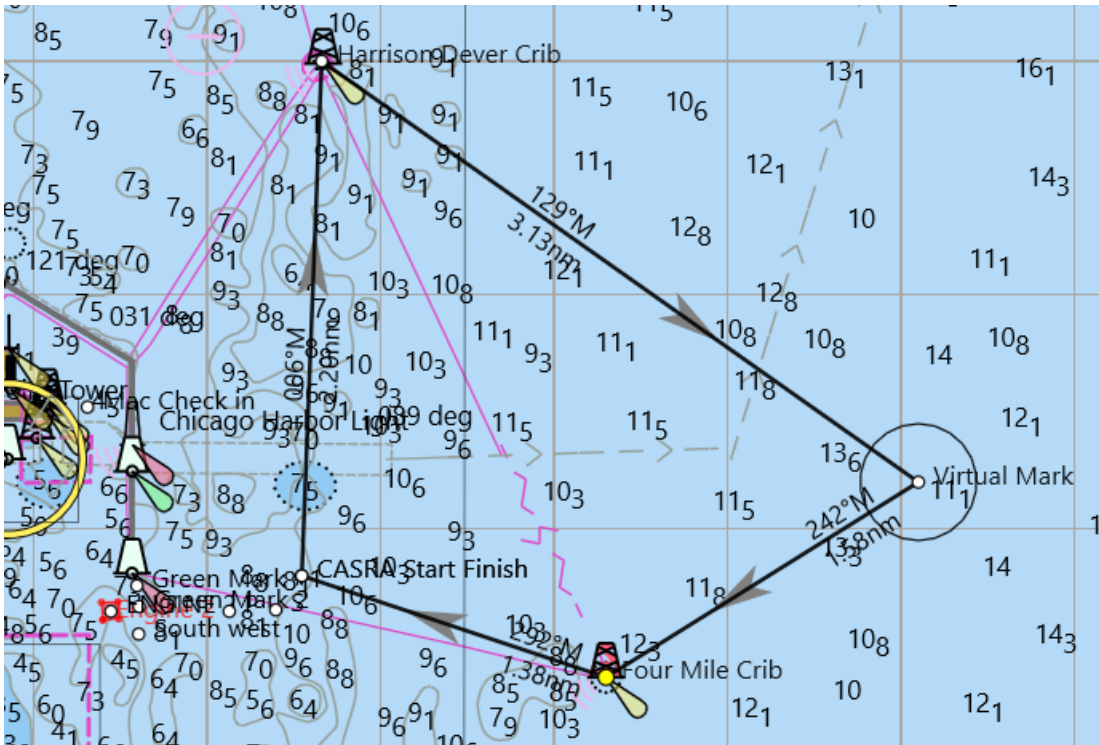
Chicago Regatta- Blue

Mark	Round	Latitude	Longitude	Bearing	Range nm	Comment
CASRA Start Finish		41 52.79N	087 34.45W			
Harrison Dever Crib	S	41 55.00N	087 34.33W	6	2.2	
Virtual Mark	S	41 53.20N	087 30.90W	129	3.13	
Yellow Drop Mark #1	S	41 49.37N	087 31.51W	191	3.85	
Four Mile Crib	P	41 52.36N	087 32.70W	348	3.12	
Harrison Dever Crib	P	41 55.00N	087 34.33W	339	2.9	
CASRA Start Finish		41 52.79N	087 34.45W	186	2.2	
					17.4	



Chicago Regatta- Red

Mark	Round	Latitude	Longitude	Bearing	Range nm	Comment
CASRA Start Finish		41 52.79N	087 34.45W			
Harrison Dever Crib	S	41 55.00N	087 34.33W	6	2.2	
Virtual Mark	S	41 53.20N	087 30.90W	129	3.13	
Yellow Drop Mark #1	S	41 49.37N	087 31.51W	191	3.85	
Four Mile Crib	P	41 52.36N	087 32.70W	348	3.12	
Orange Drop Mark #1	S	41 51.53N	087 35.78W	254	2.44	
CASRA Start Finish		41 52.79N	087 34.45W	42	1.61	
					16.35	

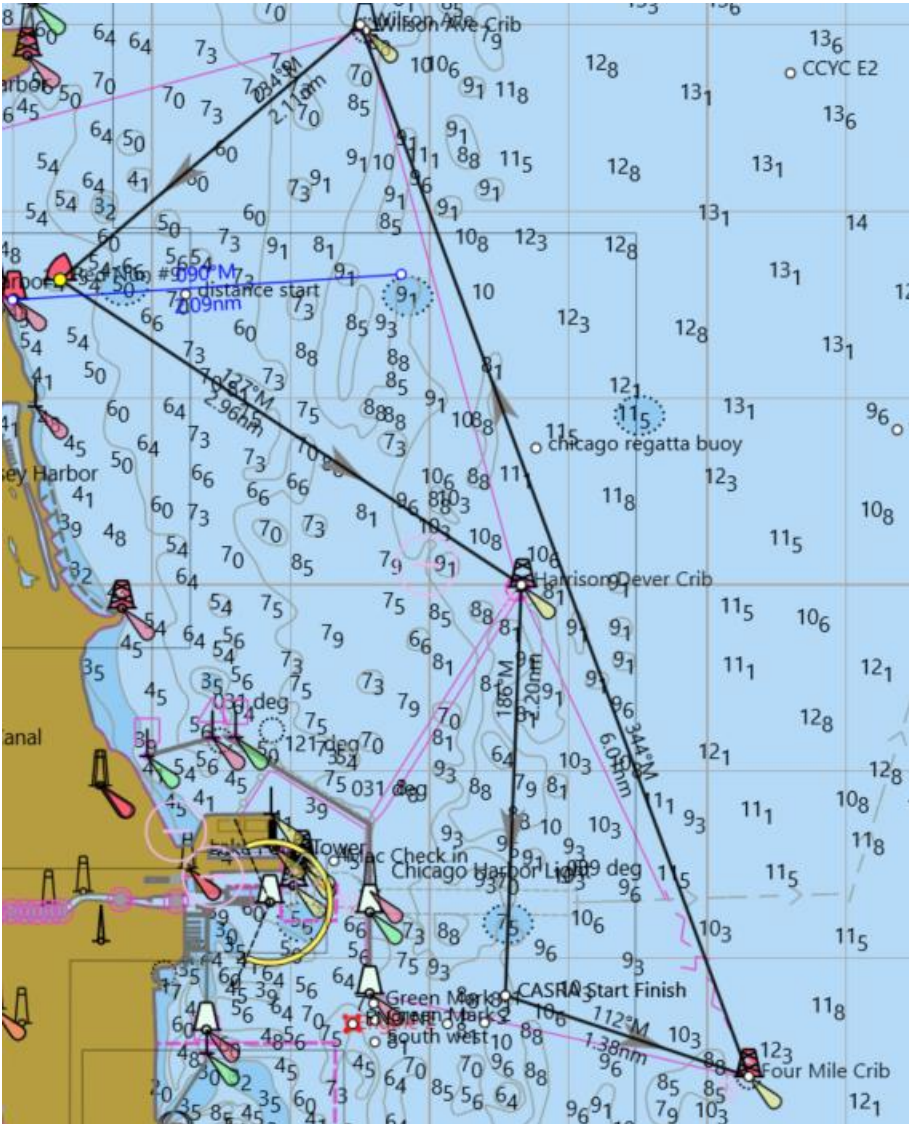


Chicago Regatta- Short

Mark	Round	Latitude	Longitude	Bearing	Range nm	Comment
CASRA Start Finish		41 52.79N	087 34.45W			
Harrison Dever Crib	S	41 55.00N	087 34.33W	6	2.2	
Virtual Mark	S	41 53.20N	087 30.90W	129	3.13	
Four Mile Crib	S	41 52.36N	087 32.70W	242	1.58	
CASRA Start Finish		41 52.79N	087 34.45W	292	1.38	
					8.29	

Chicago Regatta- Short-Reverse

Mark	Round	Latitude	Longitude	Bearing	Range nm	Comment
CASRA Start Finish		41 52.79N	087 34.45W			
Four Mile Crib	P	41 52.36N	087 32.70W	112	1.38	
Virtual Mark	P	41 53.20N	087 30.90W	62	1.58	
Harrison Dever Crib	P	41 55.00N	087 34.33W	309	3.13	
CASRA Start Finish		41 52.79N	087 34.45W	186	2.2	
					8.29	



No Virtual

Mark		Latitude	Longitude	Bearing	Range nm	Comment
CASRA Start Finish		41 52.79N	087 34.45W			
Four Mile Crib	P	41 52.36N	087 32.70W	112	1.38	
Wilson Ave	P	41 58.00N	087 35.50W	344	6.01	
Red Nun #9	P	41 56.63N	087 37.66W	234	2.11	
Harrison Dever Crib	P	41 55.00N	087 34.33W	127	2.96	
CASRA Start Finish		41 52.79N	087 34.45W	186	2.2	
					14.66	

